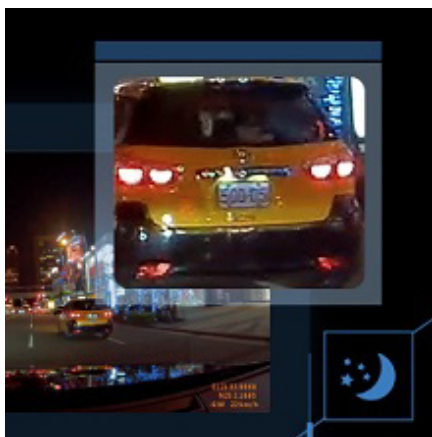




Dashcams **DrivePro™ 230**

Transcend's DrivePro 230 dashcam was designed with both style and safety in mind. The DrivePro 230 features a Sony image sensor to capture high-resolution videos with extremely fine tonal gradation even in low light. In addition, it features a GPS/GLONASS receiver, a built-in battery, a handy snapshot button, and Wi-Fi connectivity. More than just a safety device, Transcend's DrivePro 230 is a fellow traveler ready to explore more of the world with you.



Sony high-sensitivity image sensor

The DrivePro 230 uses a Sony sensor to capture high-resolution images with superb, rich color even in low light. Its built-in Wide Dynamic Range (WDR) technology balances the light and dark areas of captured images, ensuring that every critical shot is as clear as possible.



GPS/GLONASS receiver

The DrivePro 230's GPS/GLONASS receiver can log coordinates, date, and time into recorded video footage. The coordinates precisely locate where an incident happened so that emergency road services, police, or an insurance representative can respond more quickly.



Handy snapshot function

The snapshot button allows you to take photos while still recording video. During an incident, you can remove the DrivePro 230 from the vehicle to create a photographic record of collision damage.



Dashcams

DrivePro™ 230

Features

- Sony high-sensitivity image sensor
- Built-in GPS/GLONASS receiver logs your driving path
- Built-in Wi-Fi function for mobile live streaming
- Built-in battery ensures uninterrupted recording
- Parking mode and time-lapse video safeguard your vehicle continuously



DrivePro Toolbox Software

The DrivePro Toolbox is developed for Transcend DrivePro series. Featured a user-friendly interface, the DrivePro Toolbox allows you to select and play videos recorded on your DrivePro Car Video Recorder without the need to install separate codecs.

Specification

Appearance

Dimensions (Max.)	70.2 mm x 63.1 mm x 34.5 mm (2.76" x 2.48" x 1.36")
Weight (Max.)	81 g (2.86 oz)

Interface

USB Type	micro USB to car lighter adapter
Connection Interface	USB 2.0
Network Interface	Wi-Fi 802.11n

Hardware

Display	2.4" color TFT LCD
Viewing Angle for Lens	130° (diagonal)
Aperture	F/2.0

Operating Environment

Operating Temperature	-20°C (-4°F) ~ 65°C (149°F)
Storage Temperature	-25°C (-13°F) ~ 70°C (158°F)
Input Voltage	12V ~ 24V
Output Voltage	5V / 1A

Format

Resolution	Full HD 1080P
Frame Rate	30 fps
Video Format	MOV (H.264)

Warranty

Certificate	CE/FCC/BSMI/NCC/MIC/KC
Warranty	Two-year Limited Warranty

Ordering Information

16GB	TS16GDP230M (Suction Mount)
32GB	TS-DP230M-32G (Suction Mount)

Dashcams Comparison



DrivePro™ 550



DrivePro™ 230



DrivePro™ 110

Appearance

Dimensions (Max.)	95.6 mm x 65.9 mm x 40.5 mm (3.76" x 2.59" x 1.59")	70.2 mm x 63.1 mm x 34.5 mm (2.76" x 2.48" x 1.36")	70.2 mm x 63.1 mm x 32.5 mm (2.76" x 2.48" x 1.28")
Weight (Max.)	107 g (3.77 oz)	81 g (2.86 oz)	71 g (2.50 oz)

Interface

Connection Interface	micro USB to car lighter adapter	micro USB to car lighter adapter	micro USB to car lighter adapter
Network Interface	USB 2.0	USB 2.0	USB 2.0
Network Interface	Wi-Fi 802.11n	Wi-Fi 802.11n	-

Hardware

Display	2.4" color TFT LCD	2.4" color TFT LCD	2.4" color TFT LCD
Viewing Angle for Lens	160° (diagonal)	130° (diagonal)	130° (diagonal)
Viewing Angle for Rear Lens	110° (diagonal)	-	-
Aperture	F/2.2	F/2.0	F/2.0
Aperture (Rear)	F/2.8	-	-
Sony Image Sensor	V	V	V
Infrared LEDs	V	-	-
GPS Coordinates	V	V	-
Dual Lens Camera	V	-	-
Built-in Battery	V	V	V
G-Sensor	V	V	V
Snapshot	V	V	V
Microphone	V	V	V
Speaker	V	V	V
Wi-Fi	V	V	-

Format

Resolution	Full HD 1080P	Full HD 1080P	Full HD 1080P
Resolution (Rear)	HD 720P	-	-
Frame Rate	30 fps	30 fps	30 fps
Video Format	MP4 (H.264)	MOV (H.264)	MOV (H.264)

Technology

Lane Departure Warning System	V	V	-
Forward Collision Warning System	V	V	-
Head-up display	V	-	-
Headlight reminder	V	V	V
Driver fatigue alert	V	V	V
Emergency recording	V	V	V